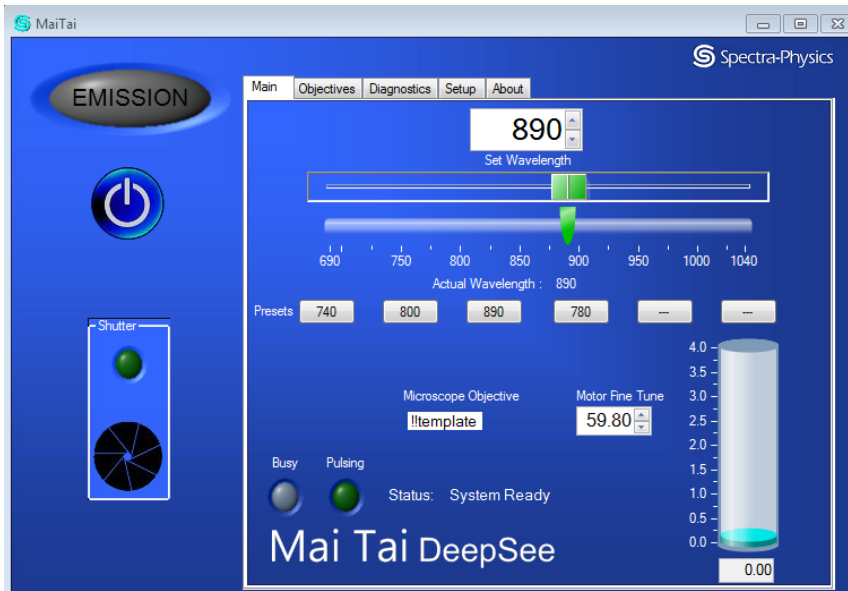
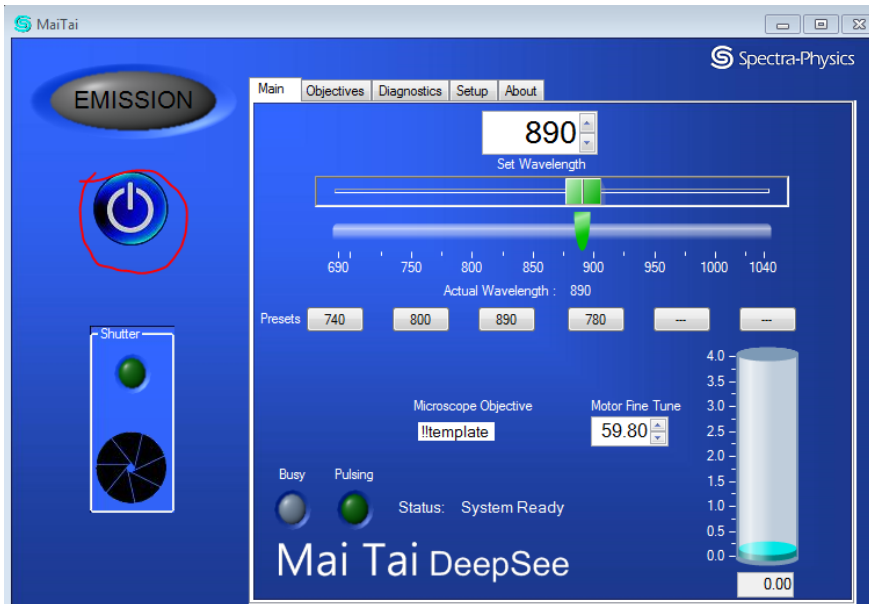


Turning on the laser

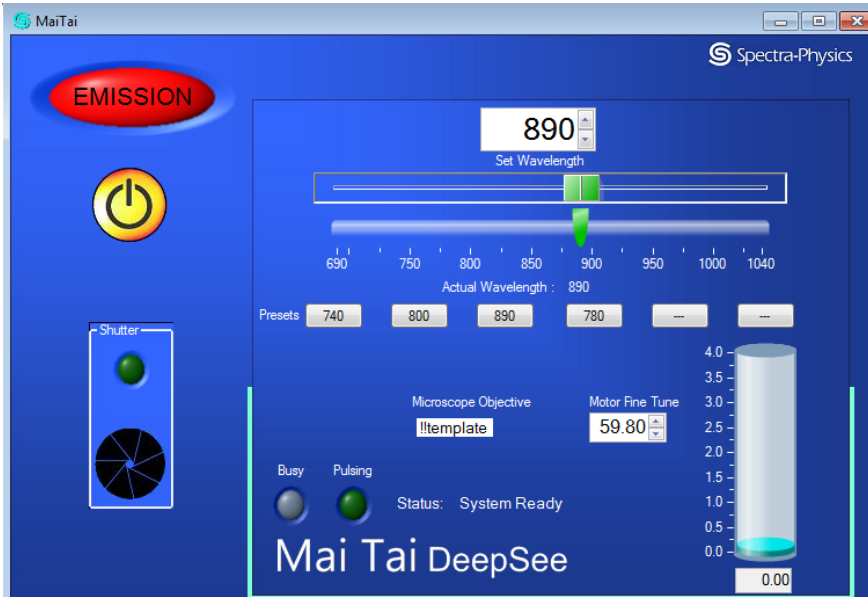
1) Find "Mai tai" software on the desktop



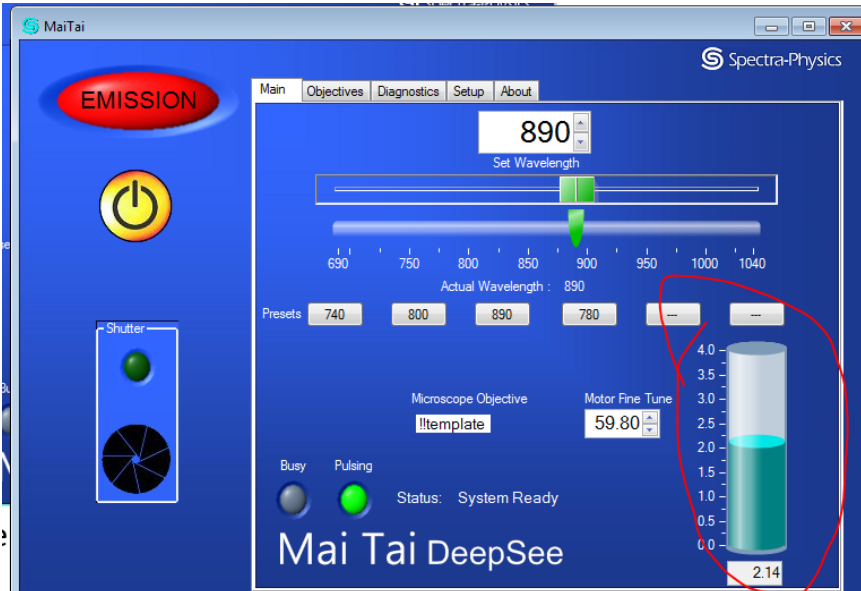
2) Press and hold the power button for 3 seconds



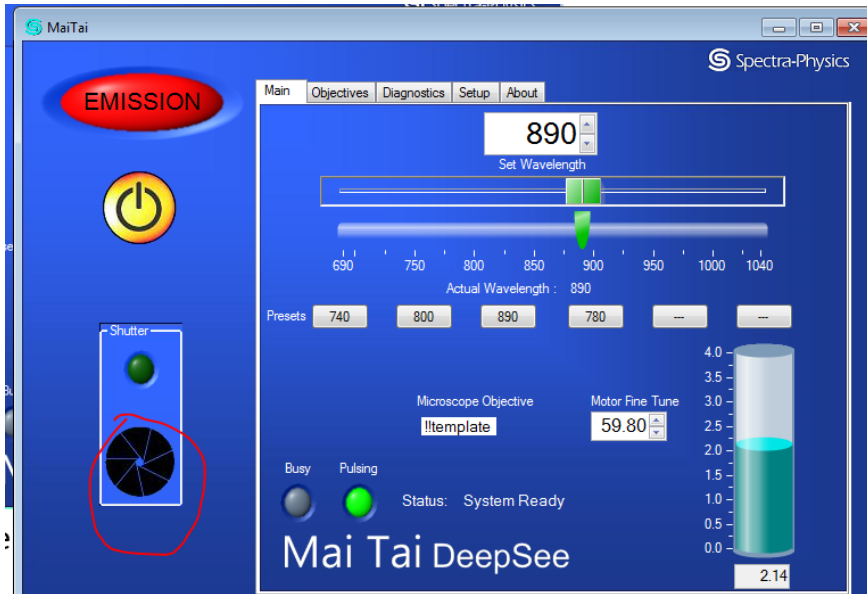
3) The color of 2 buttons will change like this



4) Wait for a minute or so for powering up



- 5) Now you are good to use after opening the shutter. For opening the shutter, press and hold the shutter button for 3 seconds

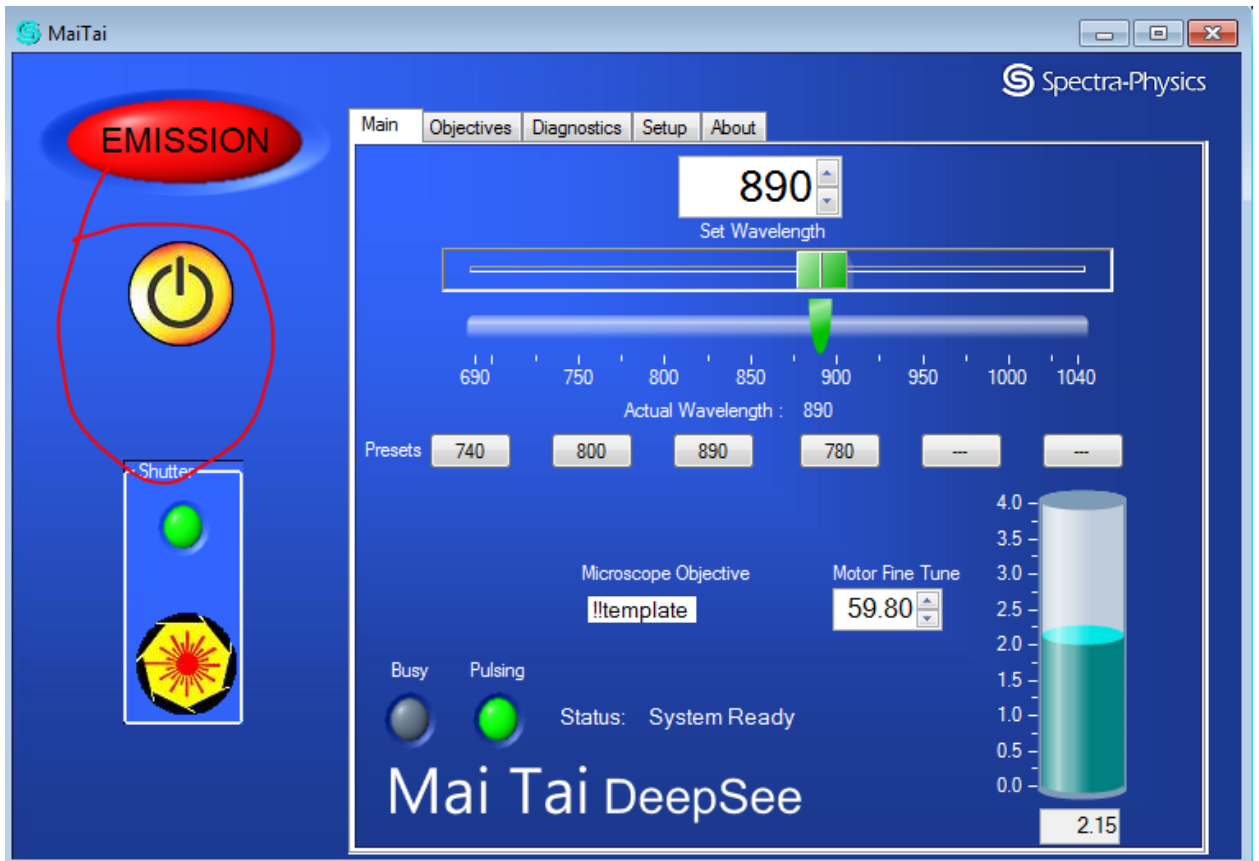


- 6) It will look this



For shutting down

Just press the power button:



Sign-out sheet

Please go to the **diagnostics** tab to find the 3 parameters for sign-out sheet.

